



exclusiva

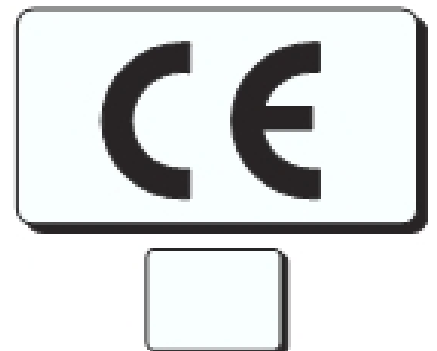


LET OP:
vóór gebruik de gebruiksaanwijzing
aandachtig lezen.



Lucht Blower

BlueStar P-800TH



Index

Introduction	2
Operation / Instructions.....	3
Safety Instructions.....	4
Maintenance Instructions / Troubleshooting.....	5
Specifications.....	6
Parts List	7

Introduction

P-800TH Air Movers are Certified Professional Level Multi Functional Air Movers with the most efficient engineering design.

Features:

- Low amp draw with a rated volumn of 3200 on High.
- Super quiet motor and super lightweight.
- Easy carrying handle and stackable up to 3 units high.
- Easy and quick to disassemble for thorough cleaning and service.
- Power cord length is 6.1m.
- Easy cord wrap on handle.
- Luggage handle and wheels.
- 3-hour timer.
- 3-speed switch.
- 3 positions (0°, 20°, 90°).



Operation / Instructions

The P-800TH Air Mover is intended to move air and to dry floors, walls, furniture, etc. It is durable and easy to operate. The P-800TH has an effective balance between static pressure and airflow suitable for a variety of applications.

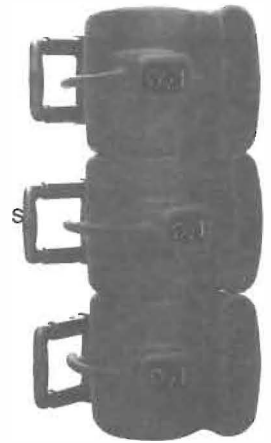
1. P-800TH Air Movers are shipped ready to be put into service. Prior to plugging in the unit into the power source, inspect thoroughly for any shipping damage.
2. Plug the electrical cord into the power outlet.
3. Carefully place the Air Mover unit on a stable, flat dry surface.
4. The unit has three-position capability to direct airflow across flat surfaces or angled upward.
5. Turn the switch to desired speed and make sure it is operating correctly.
6. All Air Movers in operation must be supervised at all times.

AIR MOVER STORAGE:

Air Movers can be stacked (up to 3) on their sides for storage.

NOTICE:

Stacking feature is not secure for transportation.



Safety Instructions

1. To prevent electric shock, do not operate unit in standing water. Never plug in or unplug the unit with wet hands or while standing in water.
2. To avoid risk of injury, do not direct air flow at face or body.
3. To reduce the risk of fire or electric shock, do not use the Air Mover with any solid-state speed control device.
4. **WARNING:** The unit is to be supplied by an isolating transformer or supplied through a residual current device(RCD) with a rated residual operating current not exceeding 30mA.
5. Do not operate any Air Mover with a damaged cord or plug. Discard the unit or return it to an authorized service facility for examination and/or repair.
6. Unplug the Air Mover from the power supply before servicing or cleaning.
7. Do not run the power cord under carpeting. Do not cover the power cord with throw rugs, runners, or similar coverings. Place the power cord away from traffic area to prevent tripping.
8. Do not allow children to play with or around Air Mover at any time.
9. Do not move or carry an Air Mover while unit is operating.
10. All Air Movers in operation must be supervised at all times.
11. If the supply cord is damaged, it must be replaced by the manufacturer or its service agent or a similarly qualified person in order to avoid a hazard.
12. This appliance can be used by children aged from 8 years and above persons with reduced physical, sensory or mental capabilities or lack of experience and knowledge if they have been given supervision or instruction concerning use of the appliance in a safe way and understand the hazards involved. Children should not play with the appliance.
13. Cleaning and user maintenance shall not be made by children without supervised.
14. The appliance is for household indoor use only.

Maintenance Instructions

1. To keep the Air Mover clean use a damp cloth to wipe the surface of the housing.
2. Never clean the unit with water.
3. When not in use, unplug and store the Air Mover in a dry indoor place out of reach of children.
4. Always disconnect the Air Mover from its power source before performing any maintenance or cleaning.
5. Clean the filters (for units with filters) as often as necessary to avoid loss of airflow.



This marking indicates that this product should not be disposed with other household wastes. To prevent possible harm to the environment or human health from uncontrolled waste disposal, recycle it responsibly to promote the sustainable reuse of material resources.

To return your used device, please use the return and collection systems or contact the retailer where the product was purchased. They can take this product for environmental safe recycling.

Troubleshooting

For any problems not listed below, call your local distributor or contact our Service Department.

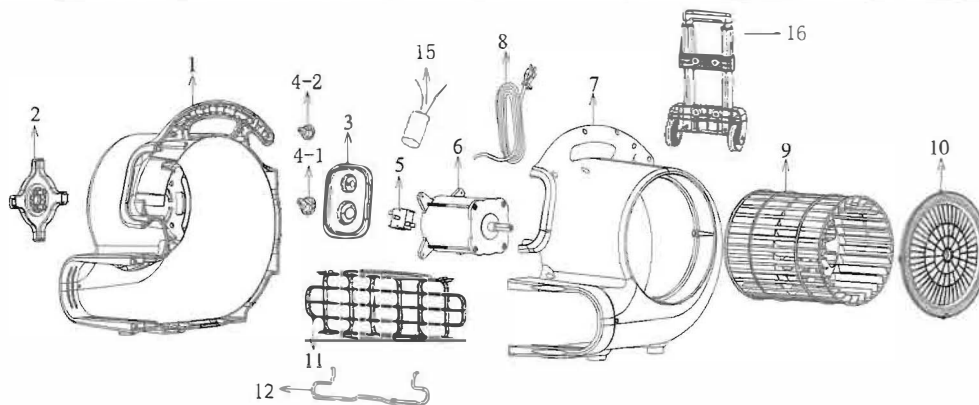
PROBLEM	POSSIBLE CAUSE	SOLUTION
Air Mover not running	No power input	Plug in the Air Mover; check circuit breaker
	Switch not turned on	Turn on switch
	Air Mover fan wheel jammed	Remove material jamming fan wheel
	Intake or exhaust blocked	Turn unit off and allow to cool, then remove blockage
Air Mover vibrates	Accumulation of dirt on fan blades	Clean Air Mover fan blades

Specifications

Model	P-800TH
Volt/Frequency	220-240V,50Hz
Power	700W
Amp	3A
Speeds	Three
Size(WxDxH)	40.5 x 47.5 x 47.5cm
Timer	Incl.
Handle/Wheels	Incl.
Cord Length	6.1m
Overheating Protecting	Thermally Protected
Rated Airflow (on high)	3200 CFM
Positions	3(0°, 20°, 90°)
Housing	PP

P-800TH Series Parts List

Item No.	Parts Name	Item No.	Parts Name
1	Left Housing	2	Grid Cover (Motor Side)
3	Timer & Switch Plate	4-1/2	Switch Knob & Timer Knob
5	Switch	6	Motor
7	Right Housing	8	Power Cord
9	Fan	10	Grid Cover (Fan Side)
11	Air Outlet Grid Cover	12	Kick Stand
13	Rubber Feet (Not Shown)	14	Screws and Nuts (Not Shown)
15	Capacitor	16	Telescopic Handle & Wheel



Dynamostraat 11 | 1014 BN Amsterdam | T 088 435 6666
 Bohemenstraat 1A | 8028 SB Zwolle | T 088 435 6677