

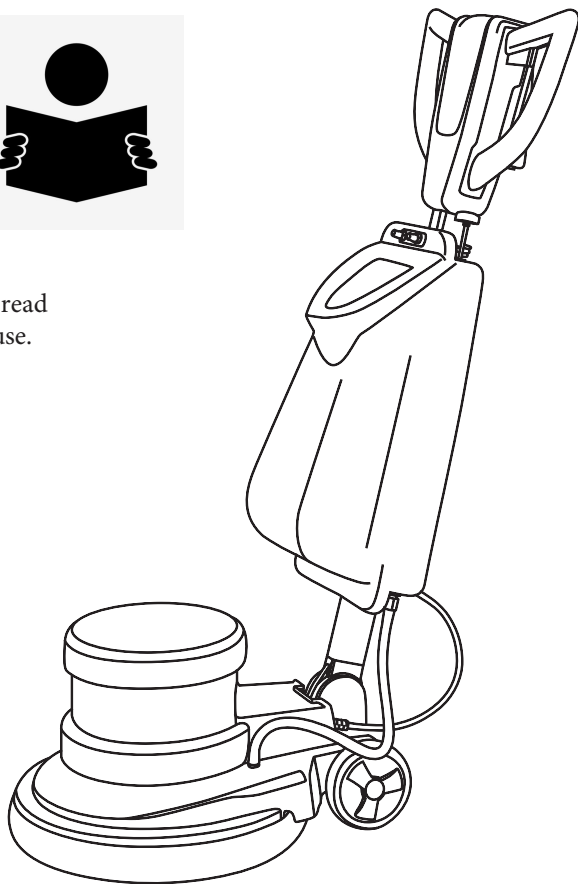


# exclusiva

## USER MANUAL



PLEASE NOTE:  
Before use, carefully read  
the instructions for use.



# LABOMAT DISC 1100P

Floor Care Carpet Cleaner & Polishing Machine

This Guide provides necessary instructions on machine operation and maintenance.

Before operation or use of this machine, please carefully read and understand this Guide.

When ordering the replacement parts, please refer to the spare and accessory parts manual attached to the machine.

Before matching parts or accessories, please firstly determine your machine model and serial number. You can order parts and accessories from any authorized service center or dealer by telephone or mail. This machine can provide excellent service. If the following can be further done, the optimum efficiency can be obtained with the lowest cost:

- Carefully operate the machine.
- Maintain the machine according to the maintenance instructions provided in the operation manual.
- Use the OE or same-grade parts for maintenance.



### Protect the environment

Please dispose the old machine components such as packaging material, battery, etc. and toxic liquid such as anti-freezing agent and oil according to your local regulations on waste disposal and on the premise of maintaining the environmental safety. Please ensure to carry out the recycling well.



## INDEX

Basic Informations	01
Application	02
Technical Features	03
Troubleshooting	04
Exploded Views	05

1. This machine is not intended for use by the physically weak intellectually obtuse or mentally disabled people (including children), unless it is safely used under the help or instructions of those who are responsible for their safety.
2. The children shall be supervised to ensure that they will not play the machine.
3. Be sure to remove the power plug from the socket before cleaning or repairing the machine.
4. If the power cord is damaged or loose, it shall be replaced by the manufacturer's service department or qualified personnel; the connection shall be of Y type.
5. When the machine stops its operation, remove the power plug from the socket immediately.
6. Power supply must match with voltage and frequency of the machine.

**WARNING: Please read this guide before using the machine.**

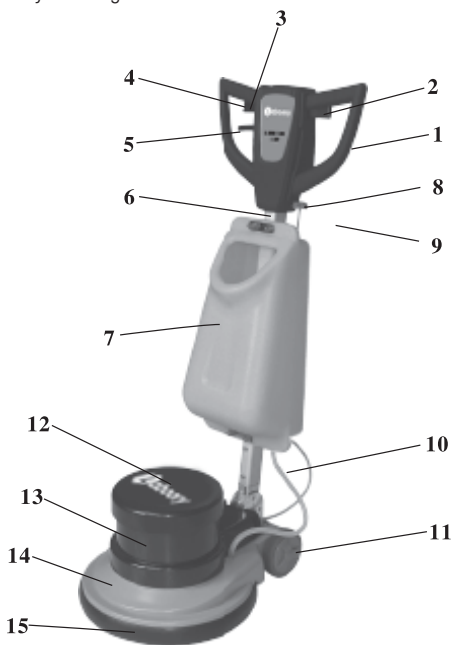
- Please read the labels on the machine very well. Cover the labels in no way and please change it if it has been damaged.
- This machine can be used only by people who are qualified.
- Please keep away this machine from your children and be careful while using this machine at the places which are close to people and children.
- Never blende varied types detergents. Otherwise, it can generate some hazardous gases.
- Place this machine backwards or on its side in no way.
- Never use this machine at places that have risk to explode.
- Never use this machine for transporting anything.
- Do not use acid solution, otherwise you can damage to people or the machine.
- Please do not operate the machine so long time while it is static. It can damage the place.
- Please do not vacuum something such as razor blade,nail and explosive materials (gasoline,alcohol etc..)
- This machine is not suitable for cleaning dangerous dust.
- Please use an extinguisher including dust instead of water in the event of fire.
- Please do not crash shelves if the things have risk to fall.
- Please determine operating speed according to vacuum conditions.
- Please avoid to operate this machine at the uneven and dusty places.
- This machine has to arrange washing and drying processes at the same time. So you should use caution signs as considering safety rules while the machine is operating at wet ground.
- Please ensure that poor maintenance doesn't causes to that problem if you it would be lived some problem while the machine is operating. And after that, please call to the closest EDİT ENDÜSTRİYEL service center.
- Please ask original spare parts for LABOORY-LABOMAT from authorized agent or dealer if you need to change them.
- Please use only original LABOORY-LABOMAT brushes.
- Please ensure that machine is not operating during maintenance process.
- Please arrange the wirings to the previous state after every maintenance processes.
- Never take down protective parts which are needed equipment to be taken down.
- Never clean this machine as using pressure water, fountain or corrosive matter directly.
- Please do not fill up detergent solution hours before using the machine.
- Please provide to be placed all covers at the way it is shown on guide.
- Please ensure that dust bag is empty before you take dust bag.
- Please do not operate this machine under rain to avoid accidents and motor to burn.
- This machine is not designed for ( including children ) physically handicapped, deaf, mentally handicapped and not-authorized people. That's kind of people should be guarded by responsible person for their safety if they need to use this machine.

## Product Introduction

Welcome to buy and use LABOMAT DISC 1100P. This machine features in easy operation, safe use and high cleaning efficiency, suitable to hotel, office building, exhibition halls and other public place for cleaning of the carpets and floors as well as low-speed polishing of various grounds. With a high cleaning efficiency, it can save much time for cleaning. Thus, it is an important device indispensable for current machinery cleaning works.

## Main Structure

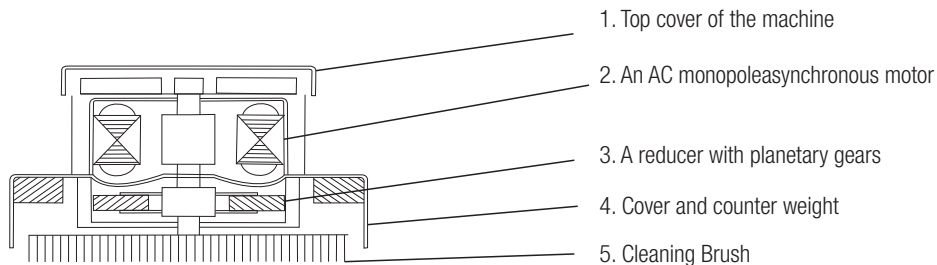
1. Operating handle
2. Left switch handle
3. Right switch handle
4. Red fused switch
5. Angle adjustment lever
6. 760 Square Tube
7. Water tank
8. Drain knob
9. Main power wire
10. Drain pipe
11. Foot wheel
12. Cover
13. Main motor
14. Disc
15. Bumping Ring



## Names and functions of all handles and buttons on the operating handle are shown as follow:

1. Control Handle: The power switch and its protective device are installed in the handle.
2. Angle Regulator and Safety Switch: If the Eccentric Ground Cleaning Machine is not used, it is allowed to lift the pull rod of Angle Regulator for the convenience of placing the Eccentric Ground Cleaning Machine and saving space. At the moment, the sharp fixing teeth of Control Handle loosen, and it is allowed to rotate the Control Handle to the position perpendicular to the ground and then loosen the pull rod to fix the Angle Regulator vertically.
- When the Eccentric Ground Cleaning Machine is operated or used normally, it is necessary to lift the pull rod of Angle Regulator and rotate the Control Handle to an angle which the operator is accustomed to (about 45°With the ground) and then loosen the pull rod to fix the Control Handle. When the Eccentric Ground Cleaning Machine start the cleaning work, it is necessary to push the Safety Switch to the center while pressing the power switch handle. At the moment, the motor is started and drives the cleaning brush to work.
3. Power Switch Handle: It is used to turn on or off the power switch.
4. Angle Regulating Rod: It is used to regulate and control the angle of handle.
5. Water Drain Knob: It is used to open the Water Tank and control the water level.
6. Power line and plug: They are used to connect the handle and the host machine.

The water tank is a container used for storing water and detergent while the water level regulating rod can regulate the flow of water or detergent. LABOMAT DISC 1100P consists of surface cover, motor, driven rubber gear, Disc and Cleaning brush.



**Main structures of the machine**

The AC monopole asynchronous motor is made from import cold rolled silicon-steel sheets of high quality, so it has high power, low loss and heat. The motor cover and machine body is made from aluminum alloy of high quality so as to ensure sufficient structure strength and beautiful appearance.

### Operating methods and notes

1. After opening the tank, please install the machine body, operating handle and water tank well according to the figure as well as the cleaning brush.
2. Check whether the power socket on site meets relative standards and ensure that voltage of the power supply is between 220V-. Excessive or insufficient voltage may lead the machine to abnormal operating, overheating or burning down.
3. Add proper solution with cleaning agent to the water tank for cleaning requirements.
4. Adjust the operating handle to an angle accustomed by the operator.
5. One must clench the operating handle with his hands and no other personnel are allowed to stand around accessories of the machine before starting so as to avoid that they are injured for swing of the machine as the handle is not clenched. Push the thumb fused switch to the center of the handle, then press the main switch and the washing machine begins to rotate for cleaning.
6. Loose the main switch handle and the machine will stop working.
7. After finish cleaning, the operating handle should be adjusted to a vertical position and the machine should be dried with a clean cloth so as to extend the machine's service life.
8. It is forbidden to use the washing machine as other cleaning devices and no additional weight is allowed to add on the machine, for example the machine is operated with the operator sitting on it. Otherwise, the operator is vulnerable and it will add loads to the machine. If it is serious, the motor may be burned down and gears of the reducer may be broken.
9. To avoid electric leakage and burn of the motor, never operate in rain.

### Care and Maintenance

1. The machine is designed to resist moisture and it operates well without water entering electrical equipments of the machine under normal usage.
2. During its usage, pay attention not to let water and cleaning agent entering the power socket or the machine directly to prevent short out or electric shock.
3. Do not disassemble the motor or planet gearbox. If finding any trouble with the motor or gearbox, please notify our company or dealer for repair. It is not allowed to replace capacitance operating or starting up with a capacitor which is not conformed to capacitance capability and voltage resistant requirements, or the motor is vulnerable.
4. Pull rod on the operating handle can not be pushed with a strong power so as to prevent unnecessary damage.

Technical Parameters

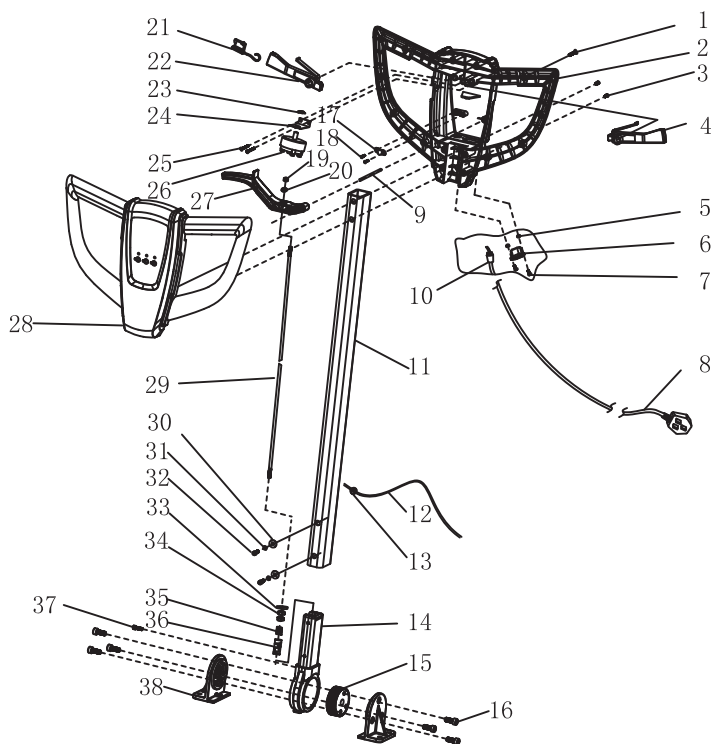
<b>Type:</b> LABOMAT DISC 1100P	<b>Safety Performance:</b> Class I
<b>Voltage:</b> 220-240 V AC 50/60 Hz	<b>Normal service life:</b> 3-5 years
<b>Power:</b> 1100 W	<b>Internal/ external materials:</b> Aluminum-plastic structures
<b>Speed of rotation:</b> 154 rpm/min	<b>Degree of anti-striking:</b> Slight striking resistant
<b>Noise:</b> 54 dB (A)	<b>Affixed accessories of the machine body:</b> carpet brush, floor brush, pin terminal and water tank
<b>Length of power cable:</b> 12 m	<b>Main Functions:</b> washing the floor and carpet, wax cleaning and low-speed polishing
<b>Diameter of Base Disc:</b> 43 cm	
<b>Non-loading:</b> A positive and negative difference of 7%	
<b>Net weight:</b> 48 kg	

Main Troubles and How to Solve Them

TROUBLE	POSSIBLE FAULT REASONS	HOW TO SLOWE
The motor does not rotate	The power cable is not connected correctly Broken power fuse, power off The power switch is damaged	Check for power wire connection for power supply and fuse Replace the power switch
The motor startup is slow	100 μ F/250V Start capacitor circuited or damaged Broken centrifugal switches	Replace the start capacitor Replace the centrifugal switch
The motor is weak	25μF/250V run capacitor is damaged The motor coil is damaged	Replace the run capacitor
The motor does stop after the power switch is disconnected	The power switch is damaged	Replace the power switch
The motor is jammed; the reducer doesn't work or severe noise is heard	Planetary gears are broken to abnormal overloading operation	Replace the gear

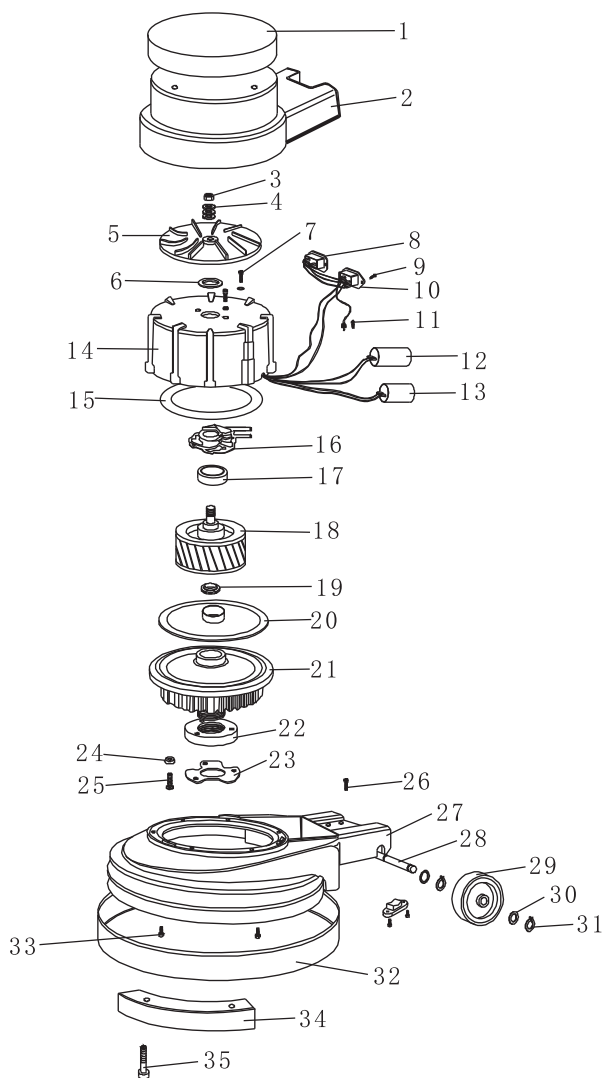
Supporting parts

1. Machine 1 set
2. Operating handle 1 set
3. External short power wires (on handles) 1 set
4. Screws and inner hexagonal spanner for connection of operating handle 1packet
5. Water tank 1 piece
6. Cleaning brush 2 pieces
7. Pin terminal 1 piece
8. User Manual 1 copy
9. Quality Certificate 1 copy

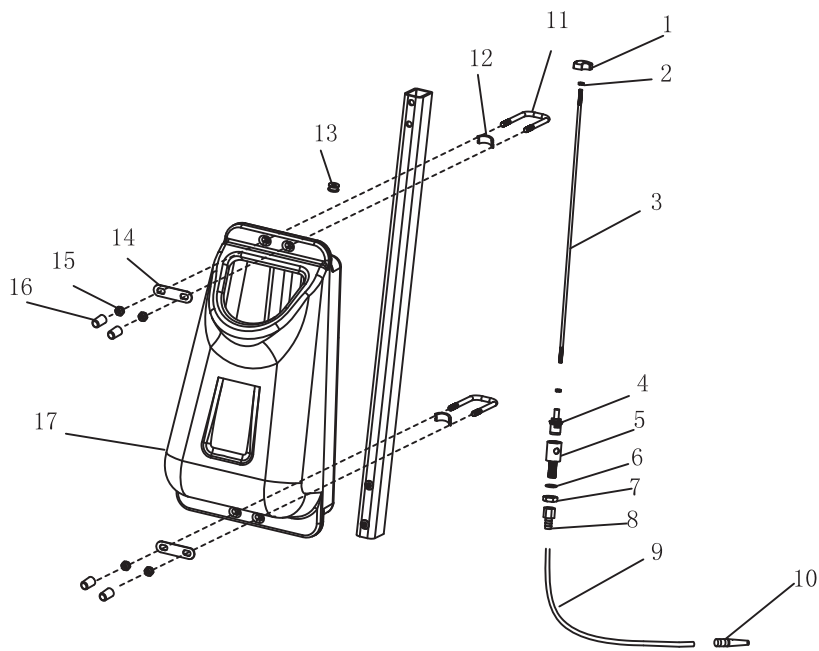


1. BBH5*16	16 pieces	20. Washer Ø5.0*14*1.0	1 piece
2. Rear cover of handles	1 piece	21. Fused switch	1 piece
3. CM5*16	2 pieces	22. Right switch handle	1 piece
4. Left switch handle	1 piece	23. Nut M12*3	1 piece
5. Self-lock nut M3	2 pieces	24. Switch iron sheet	1 piece
6. In-built socket (female plug)	1 piece	25. TAH5*16	2 pieces
7. KM3*10	2 piece	26. Round switch	1 piece
8. 3*1.5*12 meter-long power wire	1 piece	27. Angle adjustment handle (Black)	1 piece
9. Ø6x60 pin	1 piece	28. Front cover of handle	1 piece
10. Black outgoing coil of 220V	1 piece	29. 760 drawing wire	1 piece
11. 760 Square tube	1 piece	30. Washer Ø6*16*1.0	4 pieces
12. Power cable 3*1.5*1.05	1 piece	31. Spring washer Ø6	4 pieces
13. Power coil Ø12	1 piece	32. M6*16 Outer hexagonal M6*16	4 pieces
14. Handle seat casing	1 piece	33. Washer Ø10*25*2.5	1 piece
15. Round tooth	1 piece	34. Nut M5	2 pieces
16. CM6*12	6 pieces	35. Spring 2.2*15*105*16N	1 piece
17. Cable clamp (fine)	1 piece	36. Needle tooth	1 piece
18. TAH4*16	2 pieces	37. CM*10	1 piece
19. Self-lock nut M5	1 piece	38. Aluminium seat	1 piece

- 1.Top Cover
- 2.Middle Cover
- 3.Nut M12
4. Washer Ø12
- 5.Cooling blades
- 6.Washer
- 7.Screw
- 8.Branching sockets
- 9.Screw
- 10.Inlet sockets
- 11.Screw M5x10mm
- 12.Starting capacitance (100uf)
- 13.Run capacitor (25uf)
- 14.Motor stator
- 15.Insulation sheets
- 16.Centrifugal switch
- 17.Bearing 6002
- 18.Rotors
- 19.Bearing E20
- 20.Back cover of the motor
- 21.Gearbox
- 22.Flange
- 23.Three-blade impeller
- 24.Bevel washer
- 25.KCM8x20mm
- 26.KCM8x25mm
- 27.Chassis
- 28.Wheelshaft
- 29.Truckles
- 30.Washer
- 31.Clamp spring
- 32.Bumping Ring
- 33.Chassis screw M6(25mm)
- 34.Balancing bush
- 35.KCM8x20mm







- |  |          |                                    |          |
|--|----------|------------------------------------|----------|
| 1. Water tank knob                                 | 1 piece  | 10. Outlet hose (Black)            | 1 piece  |
| 2.M5 copper nut                                    | 2 pieces | 11. Water tank buckle              | 2 pieces |
| 3.Pull rod of water tank made from 5CM round steel | 1 piece  | 12.Gasket of water tank buckle     | 2 pieces |
| 4.Valve core of water tank                         | 1 piece  | 13.Small rubber dual-paned mat     | 1 piece  |
| 5. Water tank regulating valve (short)             | 1 piece  | 14.Sheet iron of water tank buckle | 2 pieces |
| 6.Large rubber waterproof ring of water tank       | 1 piece  | 15.M8 Standart nut                 | 4 pieces |
| 7.22CM hexagonal cooper nut of water tank          | 1 piece  | 16.Screw                           | 4 pieces |
| 8.17CM tail copper of water lank                   | 1 piece  | 17. Water tank                     | 1 piece  |
| 9.Silicone tube of water tank                      | 1 piece  |                                    |          |



LABOMAT DISC 1100P

VOLTAGE FREQUENCY	220-240 V 50/60 Hz	MOTOR POWER	1100 W
BRUSH ROTATING	154 RPM/MIN	BRUSH DIAMETER	43 cm

RoHS  
2002/95/EC



IPX4  
Class I



Dynamostraat 11 | 1014 BN Amsterdam | T 088 435 6666  
Bohemenstraat 1A | 8028 SB Zwolle | T 088 435 6677

---